

*The Committee on Coordination  
extends a cordial...*

*YOU'RE  
invited*

**New Castle Presbytery  
2019  
Annual "Beach Retreat"**  
*Hyatt Regency Chesapeake Bay  
100 Heron Boulevard  
Cambridge, MD*



**Worship for the 21<sup>st</sup> Century**

***Friday, March 1<sup>st</sup> through  
Saturday, March 2, 2019***

*Plenary Speaker, Workshops and Fellowship Time  
followed by the 845<sup>th</sup> Stated Meeting of  
Presbytery on Saturday morning*



## Why should minister members, ruling elders, deacons and members of our churches attend this year's Annual Beach Retreat?

### The world is changing rapidly, and so is the church. What makes for faithful and vital worship in the 21<sup>st</sup> century?

Tom Long will share his wisdom on "Preaching in a Disenchanted Age" in Friday's plenary. Kim Long will offer a workshop on the new *Book of Common Worship*, highlighting features that speak to the challenges and opportunities of our time: a new emphasis on shared leadership between elders, deacons, and clergy; ideas for gesture and movement, the use of multiple languages, a fully inclusive marriage liturgy, services that respond to natural disasters or violent events, and prayers for justice and reconciliation.

In his workshop, Tom will discuss "Preaching the Parabolic Imagination of Jesus," how the characteristics of Jesus' own parabolic preaching can speak to hearers today. Worship will engage the senses and model how music, art, song, and sacrament invite us into an encounter with God and send us out to be Christ's body in the world.

View bios and additional information on the Beach Retreat webpage at:

<https://www.ncpresbytery.org/2019-ncp-beach-retreat/>

### Workshops Include:

**NCP Healthy Boundaries** (*Thursday*)

**Preaching the Parabolic Imagination of Jesus**

**New Book of Common Worship:**  
*Speaking to our Challenges and Opportunities*

**IGNITE Grant writing Workshop:**  
*The 8-Step Grant writing System*

**PC(USA) Church Leadership Connection:**  
*Navigating CLC for Call Seekers & Calling Organizations*

**IGNITE Church "Unglued":**

*Introduction to pilot program which develops practices that bring deep and sustainable change for the mission of Jesus Christ in our communities*

**NOTE:** *Workshop selection will be emailed to registered participants in late January*

## PLENARY SPEAKER & WORKSHOP LEADER



Rev. Dr. Tom Long

## WORKSHOP LEADERS



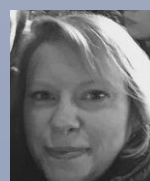
Rev. Dr. Kim Long



Dr. Sheldon  
Nix, Ph.D.



Rev. Jihyun Oh



Rev. Sara Robbins



Rev. Susan Rothenberg

## **RETREAT SCHEDULE** *(subject to minor modifications)*

### **THURSDAY, February 28, 2019**

1:00- 3:30 PM **NCP Healthy Boundaries** *(a link to this offering will be available in mid-January through the Beach Retreat webpage)*

### **FRIDAY, March 1, 2019**

7:00 AM **Yoga**  
7:45 AM **Breakfast** *(for Thursday overnight participants)*  
9:00 AM **Trail Walk facilitated by Hyatt staff**  
9:00 AM **Beach Retreat Registration Opens**  
9:45 AM **Welcome and Opening Worship** *w/Rev. Dr. Kim Long preaching*  
11:00 AM **Break**  
11:15 AM- **Plenary – “Preaching in a Disenchanted Age”** *(Ballroom)*  
12:15 PM *Rev. Dr. Tom Long*  
12:30 PM **Lunch (Ballroom)**  
1:30 PM **Workshops - Session I**

- *IGNITE Grant Writing*
- *New Book of Common Worship*
- *Church Leadership Connection*
- *Church “Unglued”*

  
2:45 PM **Break**  
3:00 PM **Workshops - Session II**

- *Preaching the Parabolic Imagination of Jesus*
- *Church Leadership Connection*
- *Church “Unglued”*

  
4:15-5:45 PM **Church Leadership Connection – Schedule individual sessions with PC(USA) Manager for Call Process Support**  
6:00 PM **Dinner** *(Ballroom)*  
8:00 PM **“Dive-In” Movie** *by indoor poolside, or enjoy fellowship by the indoor and/or outdoor fireside*

### **CHILDCARE NEEDED?**

Please contact the  
Presbytery office via email  
*([dscully@ncpresbytery.org](mailto:dscully@ncpresbytery.org))* or  
via phone at (302) 366-0595  
*to confirm no later than  
Thursday, February 8<sup>th</sup>.*

### **SATURDAY, March 2, 2019**

7:00 AM **Trail Walk facilitated by Hyatt staff**  
7:45 AM **Breakfast**  
8:30 AM **Presbytery Meeting Registration opens**  
**Checkout** of the hotel *before* worship  
9:15 AM **Worship**  
10:30 AM **Presbytery Meeting**  
12:00 PM **Adjourn!**

## BEACH RETREAT REGISTRATION—2019

<u>SELECTION</u>	SINGLE OCCUPANCY	DOUBLE OCCUPANCY
<b>RETREAT PACKAGE:</b> <i>One overnight for Friday with:</i> <ul style="list-style-type: none"> <li>• <i>Retreat commencing Friday at 9:00a</i></li> <li>• <i>Plenaries, workshops &amp; retreat materials</i></li> <li>• <i>Lunch &amp; dinner Friday</i></li> <li>• <i>Breakfast Saturday</i></li> </ul>	\$237.00	\$190.00 <i>(per person)</i>
<b>RETREAT PACKAGE:</b> <i>Two overnights for Thursday &amp; Friday with:</i> <ul style="list-style-type: none"> <li>• <i>Breakfast Friday</i></li> <li>• <i>Retreat commencing Friday at 9:00a</i></li> <li>• <i>Plenaries, workshops &amp; retreat materials</i></li> <li>• <i>Lunch &amp; dinner Friday</i></li> <li>• <i>Breakfast Saturday</i></li> </ul>	\$337.00	\$290.00 <i>(per person)</i>
	<b>NO OCCUPANCY</b>	
<b>RETREAT PACKAGE (no overnight):</b> <ul style="list-style-type: none"> <li>• <i>Retreat commencing Friday at 9:00a</i></li> <li>• <i>Plenaries, workshops &amp; retreat materials</i></li> <li>• <i>Lunch &amp; Dinner Friday</i></li> <li>• <i>Breakfast Saturday</i></li> </ul>	\$160.00	
<b>PLENARIES/WORKSHOPS/ MATERIALS ONLY</b>	\$25.00	

REGISTRANT NAME: \_\_\_\_\_

E-MAIL ADDRESS: \_\_\_\_\_

CHURCH: \_\_\_\_\_ PHONE: \_\_\_\_\_

Dietary restrictions/physical limitations: \_\_\_\_\_

Registration with payment (online or via USPS mail) must be received *no later than February 4th.*

**RATES/AVAILABILITY GUARANTEED THROUGH 2/4/19. CALL PRESBYTERY AFTER  
THIS DATE TO REQUEST AVAILABILITY**

**Register online beginning Tuesday, December 4<sup>th</sup> at:**

**<http://www.ncpresbytery.org/beach-retreat-2019/> OR Mail to New Castle Presbytery**